



Community Advisory Groups

Ypsilanti Community Schools

College Credit and Career
Credential Advisory Committee

April 4, 2013

CHARACTERISTICS KNOWLEDGE FUTURE 60
THINKING ABILITY OPPORTUNITY PART PROFICIENT VARIETY
SERVICE EMPLOYABLE IDEAL RESPECT MATH GOOD SELF-RESPECT
EDUCATIONAL WRITING OPTIONS THINKER POST-HIGH LEARNERS
PERSONAL RELATIONSHIPS ACADEMICALLY WORLD WORK PRODUCTIVE GOALS WHATEVER DREAM
GET

COMMUNITY

SCIENCE ENGAGED PROBLEM-SOLVING SCORES MULTICULTURAL AMBASSADOR
COMPLETE LIFELONG CAREER LEARNING GIVE SAVVY
BETTER SELF PREPARED PROBLEM EMPLOYABILITY WHOLESOME
SOCIOALLY CHOICES UNDERSTANDING THINK RESOURCES FINANCIAL
THRIVE STRONG OPPORTUNITIES TECHNOLOGY
ACCOUNTABILITY STUDENTS WELL PLAN
ACADEMICS LOVE GRADUATE SOLID
SUCCEED WELL-ROUNDED POST-SECONDARY ARTS
SYSTEM EQUALIZER EDUCATION PEOPLE
LITERATE DIVERSE OTHERS LEARN
MEMBERS MULTILINGUAL LEARNER SUCCESSFUL READINESS MOTIVATED
DIFFERENT WANT GREAT CONFIDENCE SCHOLARSHIPS CRITICALLY
BELONGING CHOOSE ETHICS INDEPENDENT NAVIGATE UNDERSTAND
TALENTS EXPOSURE DIVERSITY GRADUATES SOCIETY DESIRE
ACHIEVE LEADERS LIFE INVOLVEMENT DISTRICT
ETC LEVEL BACK KNOW
JOB HIGH THINKERS
SENSE
CONFIDENT SOLVERS
CAREING

SKILLS

CREATIVE REAL COLLEGE
BILINGUAL TEACHERS SOLVER
HEALTHY VISION ACADEMIC
ETHIC CRITICAL SCHOOL HARD
EXPERIENCE GLOBAL PRIDE NEW
UNIVERSITY ROUNDED

Design Pillars

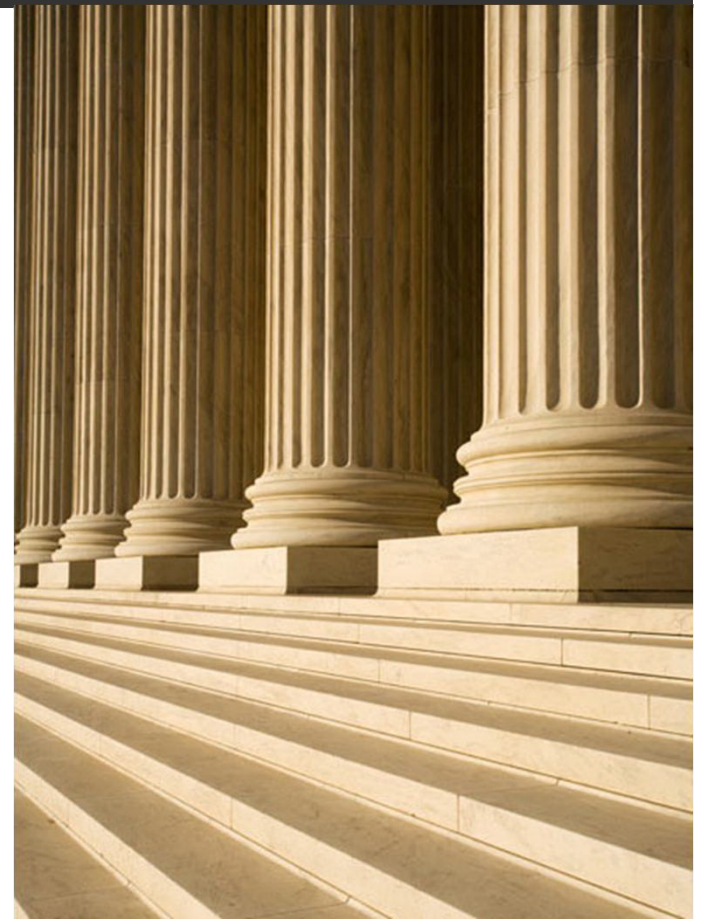
Birth Through Kindergarten Entry

Leadership at All Levels

Positive Culture/Climate Focused on Learning

High Quality Teachers/Teaching

Every Student Will Have an Opportunity to Earn College Credit or a Career Credential Prior to High School Graduation



Committee Membership

Rick Leyshock , YCS Resident	Alan Burg , Consultant
Linda Blakey , WCC Vice President	Ellen Fischer , Early College Alliance
Holly Heaviland , WISD Director	Jack Bidlack , B-Side of Youth/EMU
Dennis Brunzell , YNT Counselor	Julie Evershed , YPS Parent
Paula Sizemore , YNT Assistant Principal	Chris Kleimola , YPS Parent
Therese Taylor , Michigan Works!	Steve Giralдин , Michigan Rehabilitation Services
Charis Bass , Willow Run Teacher	Marie Harrell , Michigan Rehabilitation Services
Tammey Jackson , Willow Run Teacher	

Core Values

Diversity

High Expectations
for All Students

Student Voice
and
Empowerment

Vibrant Family
and Community
Partnerships

Educational
Excellence

Resilience

Creativity and
Innovation

Respect

Responsibility

Guiding Principles



1. High expectations for ALL learners
2. Evidence-based “best” practices while allowing for innovation and creativity
3. Family and community partnerships
4. Student voice and empowerment
5. Responsibility, efficiency and financial viability

Process

- ▣ Reviewed existing early colleges and CTE opportunities
 - ▣ Reviewed Southeast Michigan Labor Market trends
 - ▣ Identified local resources:
 - ▣ Michigan Works!, Michigan Rehabilitation Services, WCC, EMU, Washtenaw County Workforce Development Board
 - ▣ Developed position paper with recommendations
-

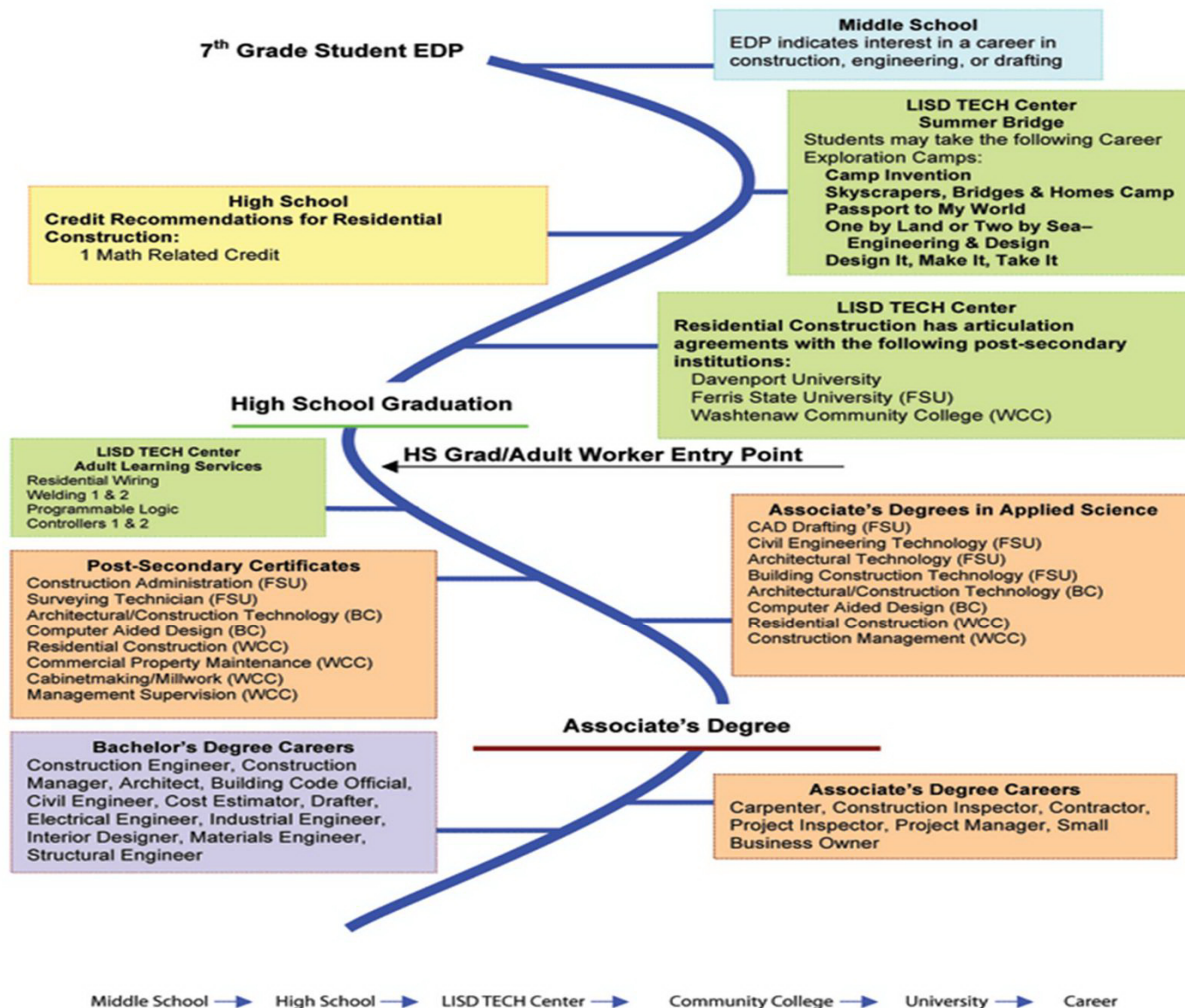
Description of Position Paper

- ▣ Defined dual enrollment & potential models
 - ▣ Analyzed dual enrollment research
 - ▣ Identified best practices and essential elements
 - ▣ Transition experiences
 - ▣ Explicit instruction on learning to learn & work (i.e. soft skills)
 - ▣ Academic skills & persistence (COMPASS/ACT testing)
 - ▣ Program formats
 - ▣ Analyzed employment forecasting data
 - ▣ Recommendations
-

7 Recommendations

1. Create a **Task Force** of school and community members
 - ▣ Draft Service Agreement with WCC contracting for services
 - ▣ Develop partnerships with EMU, Michigan Works!, & Michigan Rehabilitation Services
 - ▣ Create a **Work Team** to develop essential supports, such as **soft skills curriculum & implementation plan**, professional development and shared services
2. Apply for **early/middle college status** to Michigan Department of Education
3. Conduct an **evaluation and redesign model** for current and future CTE programs
4. Design **career exploration programming** with community partners, elementary through high school and beyond
5. Pilot **specially designed career pathway programs** in Construction & Health for 2013-14
6. Pilot **summer bridge programming** with WCC for 2013
7. Solicit **student voice and feedback** to identify experiences, challenges or barriers

Planning Your Successful Career Pathway Residential Construction



**Washtenaw
Community
College for**

Teens

Grades 9-12

SUMMER PROGRAMS

Career Academies

Learn about in demand career fields and develop the skills needed for academic and career success from the experts.

Summer Enrichment

Prep for the ACT, have fun with Improv, Finance for Life and more!

Registration begins March 25, 2013

For more information go to wccnet.edu/lifelong-learning or call 734-677-5060 or email youth.activities@wccnet.edu



Washtenaw Community College

**Washtenaw
Community
College for**

Kids

SUMMER CAMPS

Grades K-8

Camp Invention

The nationally-acclaimed **Camp Invention** program immerses elementary school children in exciting, hands-on learning disguised as fun. Early registration discounts are now available.

www.campinvention.org

or call 800-968-4332 **Register TODAY for Camp Invention!**

NEW!



Camps and classes

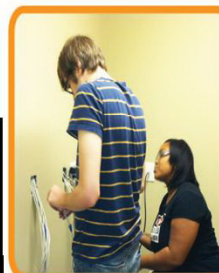
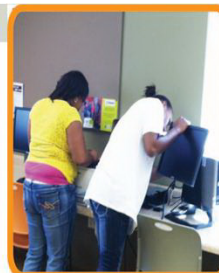
Summer learning can be fun with Camp, Classes and Workshops in: Drama, Pottery, Guitar and more!

Registration begins March 25, 2013

For more information go to wccnet.edu/lifelong-learning or call 734-677-5060 or email youth.activities@wccnet.edu



Washtenaw Community College



Ann Arbor Area
community foundation



and digital INCLUSION

A Crash Course in Computers & Technology

"Don't just play em - fix em"

Call The B. Side TODAY!!!

734.487.6570

When: July 9th - August 2nd, 2012

Days: Monday - Thursday

Time: 10am to 4pm

Where: EMU College of Business
300 W. Michigan Ave., Ypsilanti

**FREE
COMPUTER &
SOFTWARE**
(\$350 value)

You must be able to attend all classes to sign up

Community Action Network is collaborating with Digital Inclusion (DI), a computer refurbishment and technical training program operated by The B. Side (The Business Side of Youth), to provide job readiness training in the computer technology field. Youth in the program will receive 96 hours of computer hardware, software and softskills training. The training includes the areas of:

- Data cleaning and wiping
- Hardware (components and their uses)
- Hardware/Software Installation
- Understanding the relationships of hardware and software
- Troubleshooting Hardware and Software
- Introduction to malicious software and security tools
- Resume writing
- Interviewing techniques
- Dressing for success
- and much more...

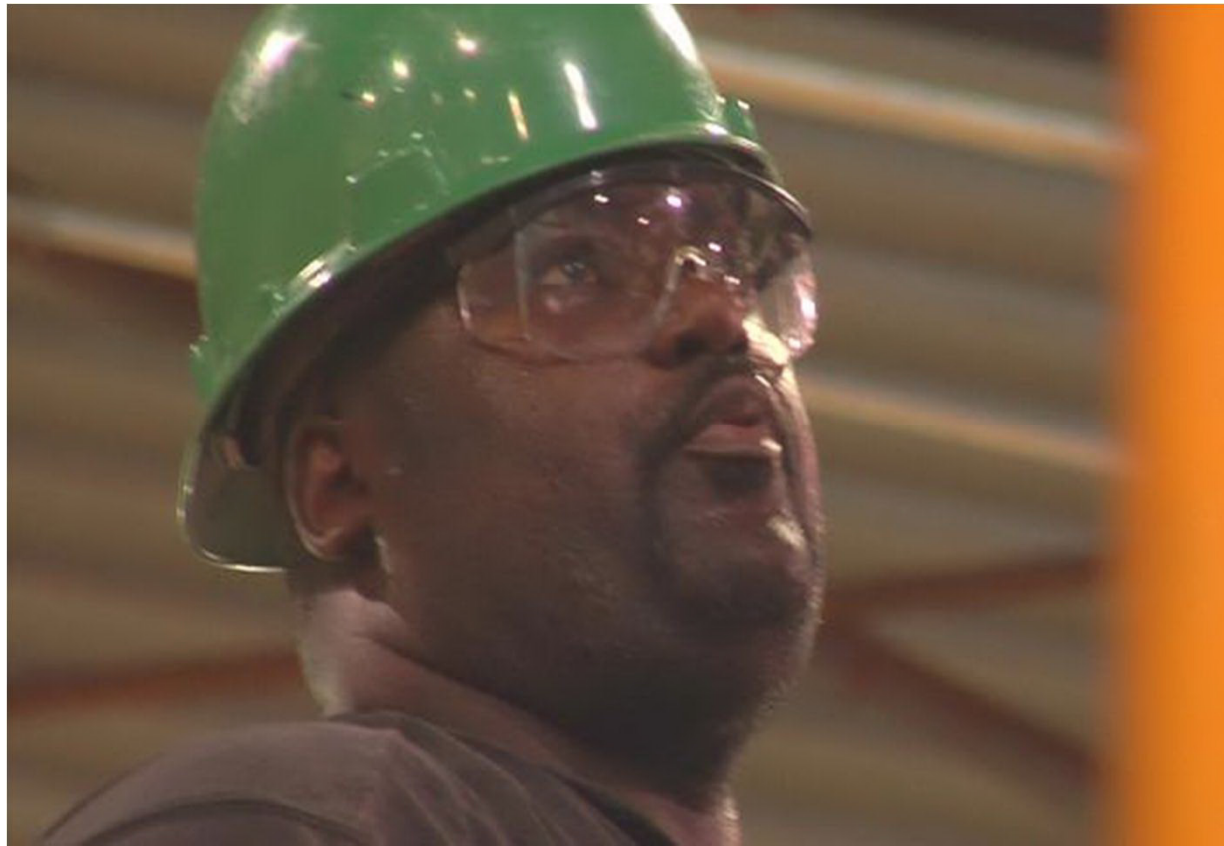
If you are interested in participating please contact your local CAN Youth Representative ASAP! There are only 10 slots available.

We would like to thank the Ann Arbor Area Community Foundation Youth Council for providing the grant to make this collaboration possible.

7 Recommendations

1. Create a **Task Force** of school and community members
 - ▣ Draft Service Agreement with WCC contracting for services
 - ▣ Develop partnerships with EMU, Michigan Works!, & Michigan Rehabilitation Services
 - ▣ Create a **Work Team** to develop essential supports, such as **soft skills curriculum & implementation plan**, professional development and shared services
2. Apply for **early/middle college status** to Michigan Department of Education
3. Conduct an **evaluation and redesign model** for current and future CTE programs
4. Design **career exploration programming** with community partners, elementary through high school and beyond
5. Pilot **specially designed career pathway programs** in Construction & Health for 2013-14
6. Pilot **summer bridge programming** with WCC for 2013
7. Solicit **student voice and feedback** to identify experiences, challenges or barriers

Construction Partnership



[WCC Construction Video](#)



City of Ypsilanti- River Side Park



Habitat for Humanity Build Site



Washtenaw County Development



New Facility on WCC Campus

7 Recommendations

1. Create a **Task Force** of school and community members
 - ▣ Draft Service Agreement with WCC contracting for services
 - ▣ Develop partnerships with EMU, Michigan Works!, & Michigan Rehabilitation Services
 - ▣ Create a **Work Team** to develop essential supports, such as **soft skills curriculum & implementation plan**, professional development and shared services
2. Apply for **early/middle college status** to Michigan Department of Education
3. Conduct an **evaluation and redesign model** for current and future CTE programs
4. Design **career exploration programming** with community partners, elementary through high school and beyond
5. Pilot **specially designed career pathway programs** in Construction & Health for 2013-14
6. Pilot **summer bridge programming** with WCC for 2013
7. Solicit **student voice and feedback** to identify experiences, challenges or barriers

Next Steps

1. Appoint Taskforce
2. Draft Service Agreement(s)
3. Appoint Work Team
4. Complete Early/Middle College Application
5. Determine Enrollment in Career Pathway Programs

